

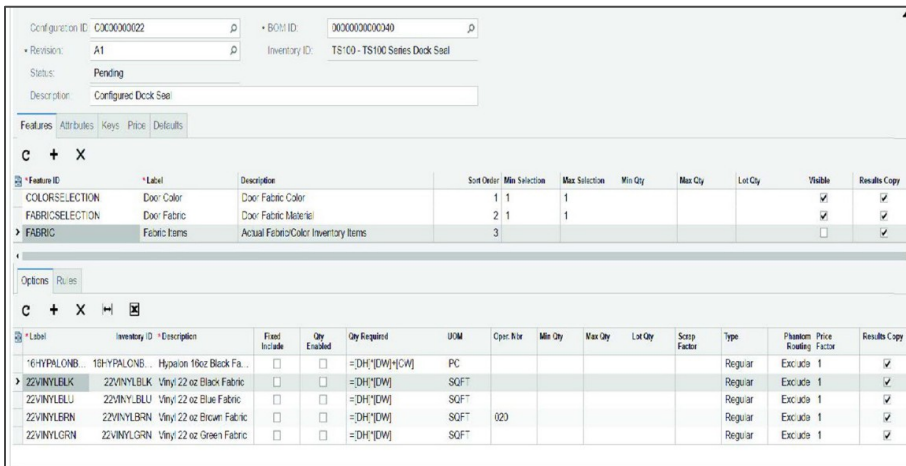
Enhance Quality and Accuracy as You Manufacture Complex Products

The Product Configurator, part of Acumatica's Manufacturing Edition, is a powerful tool that enhances quality and accuracy in the manufacturing of complex products.

By allowing the user to configure a product's features, options, and dimensions, the Product Configurator provides the tools you need to maximize your quote-to-order and manufacturing performance.

With this rules-based product configurator, you can configure products in multiple ways on quotes, sales orders, and production orders.

The Product Configurator greatly reduces the number of bills of material for a finished part based on a variety of features, options, dimensions, and functions.



The screenshot displays the configuration interface for a 'Configure Dock Seal'. It includes fields for Configuration ID (C0C0000022), BOM ID (0000000000340), Revision (A1), and Inventory ID (TS'00 - TS100 Series Dock Seal). The status is 'Pending' and the descriptor is 'Configure Dock Seal'.

Features Table:

*Feature ID	*Label	Description	Sort Order	Min Selection	Max Selection	Min Qty	Max Qty	Lot Qty	Visible	Results Copy
COLORSELECTION	Door Color	Door Fabric Color	1	1	1				<input checked="" type="checkbox"/>	<input checked="" type="checkbox"/>
FABRICSELECTION	Door Fabric	Door Fabric Material	2	1	1				<input checked="" type="checkbox"/>	<input checked="" type="checkbox"/>
FABRIC	Fabric Items	Actual Fabric/Color Inventory Items	3						<input type="checkbox"/>	<input checked="" type="checkbox"/>

Options Table:

*Label	Inventory ID	Description	Fixed Include	Qty Enabled	Qty Required	UOM	Oper. Alt	Min Qty	Max Qty	Lot Qty	Scrap Factor	Type	Phantom Rowing	Price Factor	Results Copy
HYPALONB	1B-HYPALONB	Hypalon 18oz Black Fa...	<input type="checkbox"/>	<input type="checkbox"/>	=DH[DW]*H[CW]	PC						Regular	Exclude	1	<input checked="" type="checkbox"/>
2ZVINYLBK	2ZVINYLBK	Vinyl 22 oz Black Fabric	<input type="checkbox"/>	<input type="checkbox"/>	=DH*[DW]	SQFT						Regular	Exclude	1	<input checked="" type="checkbox"/>
2ZVINYLBLU	2ZVINYLBLU	Vinyl 22 oz Blue Fabric	<input type="checkbox"/>	<input type="checkbox"/>	=DH*[DW]	SQFT						Regular	Exclude	1	<input checked="" type="checkbox"/>
2ZVINYLRN	2ZVINYLRN	Vinyl 22 oz Brown Fabric	<input type="checkbox"/>	<input type="checkbox"/>	=DH*[DW]	SQFT	020					Regular	Exclude	1	<input checked="" type="checkbox"/>
2ZVINYLRN	2ZVINYLRN	Vinyl 22 oz Green Fabric	<input type="checkbox"/>	<input type="checkbox"/>	=DH*[DW]	SQFT						Regular	Exclude	1	<input checked="" type="checkbox"/>

Reduce the number of bills of material/routings for a finished part based on a variety of features, options, dimensions, and functions.

KEY BENEFITS

CREATE CONFIGURED ORDERS IN SECONDS

- Create a new configured order by simply copying or modifying an existing configured order or quote

GAIN CONTROL OVER REVISIONS

- Make multiple revisions of the same configuration while maintaining a history of the revisions and who created them

DETERMINE PRICES WITH EASE

- Based upon the features and options chosen, the system has multiple price roll-up capabilities to determine the actual unit price for a specific configured item

PRODUCT CONFIGURATOR FEATURES AND CAPABILITIES

Configure to Order

Configure any item using predetermined features and options. The results of the configuration can carry forward to a production order.

Dimensional Capability

Use multiple dimensional calculations and formulas to calculate the material requirements for the specific components of configuration.

Order History and Look-Up

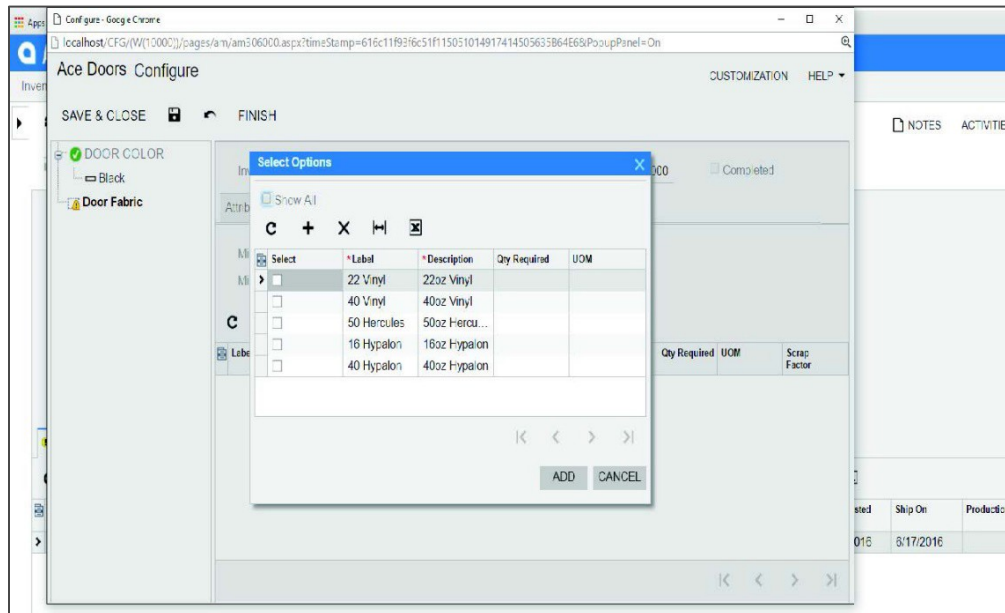
Easily look up a customer's previous configuration to create the order or make adjustments from the prior configuration.

Multi-Level Configuration

Support multi-level configurations of regular, non-phantom, items by creating multiple production orders for each regular configured item.

Formula Validation

Validate formula calculation based upon minimum and maximum attribute values or quantities for selected features and options.



ABOUT ACUMATICA

Acumatica is the world's fastest growing provider of cloud ERP, with the industry's highest customer satisfaction rating trusted by companies across diverse industries. Acumatica is easy-to-use, full-featured and mobile software. With unlimited users, everyone can have a real-time view of your business anytime, anywhere.

Contact us today to get started: [425-831-7924](tel:425-831-7924) | pcbennett.com